

VVS Investments LLC, DBA Summus Grow  
1039 E Carefree Hwy  
Phoenix, AZ 85085  
16027414145  
Lic#: 00000131DCYO00924714

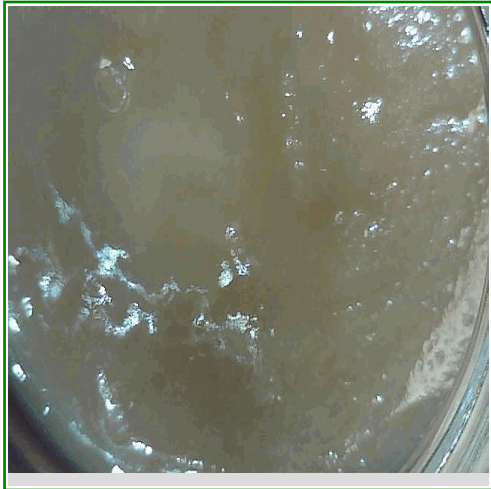
Sample: S405015-09  
CC ID#: 2405C4L0013.1273  
Lot#: N/A  
Batch#: TC050724HRT1  
Batch Size: N/A  
Manufacture Date:  
Harvest Date:

**FINAL**

Sample Name: TC050724HRT1 - Trop Cherry Live Hash Rosin  
Strain Name: Trop Cherry  
Matrix: Concentrates\_Extracts  
Amount Received: 63.7553 g

Sample Collected: 05/7/2024 11:00  
Sample Received: 05/07/2024 15:24  
Report Created: 05/10/2024 18:07

**SAFETY**



<b>Microbials</b>  <b>PASS</b>	<b>Residual Solvents</b>  <b>PASS</b>	<b>Mycotoxins</b>  <b>PASS</b>	<b>Pesticides</b>  <b>PASS</b>
<b>Metals</b>  <b>PASS</b>			

**Terpenes**

**6.15%**  
**Total Terpenes (Q3)**

**Cannabinoid Results**

<b>80.8%</b> <b>Sum of Cannabinoids (Q3)</b>	<b>71.4%</b> <b>Total THC</b>	<b>&lt;LOQ</b> <b>Total CBD</b>	<b>RATIO</b> <b>1 : 0</b> <b>THC : CBD</b>
---	----------------------------------	------------------------------------	--

Total THC= THCA \* 0.877 + d9-THC  
Total CBD= CBDA \* 0.877 + CBD

VVS Investments LLC, DBA Summus Grow  
1039 E Carefree Hwy  
Phoenix, AZ 85085  
16027414145  
Lic#: 00000131DCYO00924714

**FINAL**

Sample: S405015-09  
CC ID#: 2405C4L0013.1273  
Lot#: N/A  
Batch#: TC050724HRT1  
Batch Size: N/A  
Manufacture Date:  
Harvest Date:

Sample Name: TC050724HRT1 - Trop Cherry Live Hash Rosin  
Strain Name: Trop Cherry  
Matrix: Concentrates\_Extracts  
Amount Received: 63.7553 g

Sample Collected: 05/7/2024 11:00  
Sample Received: 05/07/2024 15:24  
Report Created: 05/10/2024 18:07

**Cannabinoids by HPLC-DAD - Compliance**

Date Analyzed: 05/09/2024 Analyst Initials: DRF SOP: C4-SOP-CHEM-003

Analyte	LOQ	Result	Result	Qualifier
	%	%	mg/g	
THCA	1.58	77.0	770	
d9-THC	1.58	3.85	38.5	
d8-THC	1.58	<LOQ	< LOQ	
CBDA	1.58	<LOQ	< LOQ	
CBD	1.58	<LOQ	< LOQ	
CBG	1.58	<LOQ	< LOQ	
CBN	1.58	<LOQ	< LOQ	
CBC	1.58	<LOQ	< LOQ	
Sum of Cannabinoids	1.58	80.8	808	Q3
Total THC	1.58	71.4	714	
Total CBD	1.58	<LOQ	< LOQ	
Total Cannabinoids	1.58	71.4	714	Q3

Total THC= THCA \* 0.877 + d9-THC. Total CBD= CBDA \* 0.877 + CBD.

VVS Investments LLC, DBA Summus Grow  
1039 E Carefree Hwy  
Phoenix, AZ 85085  
16027414145  
Lic#: 00000131DCYO00924714

Sample: S405015-09  
CC ID#: 2405C4L0013.1273  
Lot#: N/A  
Batch#: TC050724HRT1  
Batch Size: N/A  
Manufacture Date:  
Harvest Date:

**FINAL**

Sample Name: TC050724HRT1 - Trop Cherry Live Hash Rosin  
Strain Name: Trop Cherry  
Matrix: Concentrates\_Extracts  
Amount Received: 63.7553 g

Sample Collected: 05/7/2024 11:00  
Sample Received: 05/07/2024 15:24  
Report Created: 05/10/2024 18:07

**Terpenes by GC-FID- Noncompliance**

Date Analyzed: 05/09/2024 Analyst Initials: NSS SOP: C4-SOP-CHEM-012

Analyte	LOQ	Result	Result	Qualifier
	%	%	mg/g	
beta-Caryophyllene	0.019	1.91	19.1	Q3
d-Limonene	0.019	1.66	16.6	Q3
Linalool	0.019	0.847	8.47	Q3
alpha-Humulene	0.019	0.547	5.47	Q3
beta-Pinene	0.019	0.267	2.67	Q3
alpha-Pinene	0.019	0.162	1.62	Q3
Fenchol	0.019	0.139	1.39	Q3
Terpineol	0.019	0.122	1.22	Q3
trans-B-Farnesene	0.019	0.114	1.14	Q3
alpha-Bisabolol	0.019	0.108	1.08	Q3
beta-Myrcene	0.019	0.066	0.663	Q3
Citronellol	0.043	0.053	0.533	Q3
Nerolidol	0.019	0.049	0.488	Q3
Camphene	0.025	0.045	0.451	Q3
Borneol	0.028	0.039	0.386	Q3
Terpinolene	0.019	0.026	0.257	Q3
Cedrene	0.019	<LOQ	< LOQ	Q3
Cedrol	0.019	<LOQ	< LOQ	Q3
Geranyl Acetate	0.019	<LOQ	< LOQ	Q3
Pulegone	0.019	<LOQ	< LOQ	Q3
Nerol	0.043	<LOQ	< LOQ	Q3
Fenchone	0.019	<LOQ	< LOQ	Q3
Sabinene Hydrate	0.019	<LOQ	< LOQ	Q3
alpha-Phelladrene	0.019	<LOQ	< LOQ	Q3
Sabinene	0.019	<LOQ	< LOQ	Q3
p-Cymene	0.019	<LOQ	< LOQ	Q3
gamma-Terpinene	0.019	<LOQ	< LOQ	Q3
Caryophyllene Oxide	0.019	<LOQ	< LOQ	Q3
Eucalyptol	0.019	<LOQ	< LOQ	Q3
Guaiol	0.019	<LOQ	< LOQ	Q3
Geraniol	0.055	<LOQ	< LOQ	Q3
Isopulegol	0.019	<LOQ	< LOQ	Q3
beta-Ocimene	0.019	<LOQ	< LOQ	Q3
alpha-Terpinene	0.019	<LOQ	< LOQ	Q3
delta-3-Carene	0.019	<LOQ	< LOQ	Q3
<b>Total Terpenes</b>		<b>6.154</b>	<b>61.54</b>	

VVS Investments LLC, DBA Summus Grow  
1039 E Carefree Hwy  
Phoenix, AZ 85085  
16027414145  
Lic#: 00000131DCYO00924714

Sample: S405015-09  
CC ID#: 2405C4L0013.1273  
Lot#: N/A  
Batch#: TC050724HRT1  
Batch Size: N/A  
Manufacture Date:  
Harvest Date:

**FINAL**

Sample Name: TC050724HRT1 - Trop Cherry Live Hash Rosin  
Strain Name: Trop Cherry  
Matrix: Concentrates\_Extracts  
Amount Received: 63.7553 g

Sample Collected: 05/7/2024 11:00  
Sample Received: 05/07/2024 15:24  
Report Created: 05/10/2024 18:07

**Pesticides by LC/MS/MS - Compliance**

**Pass**

Date Analyzed: 05/09/2024 Analyst Initials: JCB SOP: C4-SOP-CHEM-006

Analyte	LOQ	Limit	Result	Qualifier	Status	Analyte	LOQ	Limit	Result	Qualifier	Status
	ppm	ppm	ppm				ppm	ppm	ppm		
Abamectin	0.122	0.5	<LOQ		Pass	Imazalil	0.101	0.2	<LOQ		Pass
Acephate	0.101	0.4	<LOQ		Pass	Imidacloprid	0.101	0.4	<LOQ		Pass
Acetamiprid	0.051	0.2	<LOQ		Pass	Kresoxim-methyl	0.101	0.4	<LOQ		Pass
Aldicarb	0.101	0.4	<LOQ		Pass	Malathion	0.051	0.2	<LOQ		Pass
Azoxystrobin	0.051	0.2	<LOQ		Pass	Metaxyl	0.101	0.2	<LOQ		Pass
Bifenazate	0.051	0.2	<LOQ		Pass	Methiocarb	0.051	0.2	<LOQ		Pass
Bifenthrin	0.051	0.2	<LOQ		Pass	Methomyl	0.101	0.4	<LOQ	V1	Pass
Boscalid	0.101	0.4	<LOQ		Pass	Myclobutanil	0.051	0.2	<LOQ		Pass
Carbaryl	0.051	0.2	<LOQ		Pass	Naled	0.127	0.5	<LOQ		Pass
Carbofuran	0.051	0.2	<LOQ		Pass	Oxamyl	0.253	1.0	<LOQ		Pass
Chlorantraniliprole	0.051	0.2	<LOQ		Pass	Paclbutrazol	0.101	0.4	<LOQ		Pass
Chlorfenapyr	0.507	1.0	<LOQ	V1	Pass	Permethrins	0.051	0.2	<LOQ		Pass
Chlorpyrifos	0.051	0.2	<LOQ		Pass	Phosmet	0.051	0.2	<LOQ		Pass
Clofentezine	0.051	0.2	<LOQ		Pass	Piperonyl butoxide	0.507	2.0	<LOQ		Pass
Cyfluthrin	0.507	1.0	<LOQ		Pass	Prallethrin	0.101	0.2	<LOQ		Pass
Cypermethrin	0.253	1.0	<LOQ		Pass	Propiconazole	0.101	0.4	<LOQ		Pass
Daminozide	0.507	1.0	<LOQ		Pass	Propoxur	0.051	0.2	<LOQ		Pass
Diazinon	0.051	0.2	<LOQ		Pass	Pyrethrins	0.283	1.0	<LOQ		Pass
Dichlorvos	0.051	0.1	<LOQ		Pass	Pyridaben	0.051	0.2	<LOQ		Pass
Dimethoate	0.051	0.2	<LOQ		Pass	Spinosad	0.051	0.2	<LOQ		Pass
Ethoprophos	0.051	0.2	<LOQ		Pass	Spiromesifen	0.051	0.2	<LOQ		Pass
Etofenprox	0.101	0.4	<LOQ		Pass	Spirotetramat	0.051	0.2	<LOQ		Pass
Etoxazole	0.051	0.2	<LOQ		Pass	Spiroxamine	0.101	0.4	<LOQ		Pass
Fenoxycarb	0.051	0.2	<LOQ		Pass	Tebuconazole	0.101	0.4	<LOQ		Pass
Fenpyroximate	0.101	0.4	<LOQ		Pass	Thiacloprid	0.051	0.2	<LOQ		Pass
Fipronil	0.101	0.4	<LOQ		Pass	Thiamethoxam	0.051	0.2	<LOQ		Pass
Fonicamid	0.253	1.0	<LOQ		Pass	Trifloxystrobin	0.051	0.2	<LOQ		Pass
Fludioxonil	0.101	0.4	<LOQ		Pass						
Hexythiazox	0.253	1.0	<LOQ		Pass						

VVS Investments LLC, DBA Summus Grow  
1039 E Carefree Hwy  
Phoenix, AZ 85085  
16027414145  
Lic#: 00000131DCYO00924714

**FINAL**

Sample: S405015-09  
CC ID#: 2405C4L0013.1273  
Lot#: N/A  
Batch#: TC050724HRT1  
Batch Size: N/A  
Manufacture Date:  
Harvest Date:

Sample Name: TC050724HRT1 - Trop Cherry Live Hash Rosin  
Strain Name: Trop Cherry  
Matrix: Concentrates\_Extracts  
Amount Received: 63.7553 g

Sample Collected: 05/7/2024 11:00  
Sample Received: 05/07/2024 15:24  
Report Created: 05/10/2024 18:07

**Metals by ICP-MS - Compliance**

**Pass**

Date Analyzed: 05/08/2024 Analyst Initials: JEK SOP: C4-SOP-CHEM-008

Analyte	LOQ	Limit	Result	Qualifier	Status
	ppm	ppm	ppm		
Arsenic	0.098	0.4	<LOQ		Pass
Cadmium	0.098	0.4	<LOQ		Pass
Lead	0.392	1.0	<LOQ		Pass
Mercury	0.039	0.2	<LOQ		Pass

**Mycotoxins by ELISA- Compliance**

**Pass**

Date Analyzed: 05/09/2024 Analyst Initials: DHV SOP: C4-SOP-MICRO-014

Analyte	LOQ	Limit	Result	Qualifier	Status
	ppb	ppb	ppb		
Aflatoxins Total	2.00	20	2.16		Pass
Ochratoxin A	4.00	20	<LOQ		Pass

Total Aflatoxins includes Aflatoxins B1, B2, G1, and G2.

VVS Investments LLC, DBA Summus Grow  
1039 E Carefree Hwy  
Phoenix, AZ 85085  
16027414145  
Lic#: 00000131DCYO00924714

**FINAL**

Sample: S405015-09  
CC ID#: 2405C4L0013.1273  
Lot#: N/A  
Batch#: TC050724HRT1  
Batch Size: N/A  
Manufacture Date:  
Harvest Date:

Sample Name: TC050724HRT1 - Trop Cherry Live Hash Rosin  
Strain Name: Trop Cherry  
Matrix: Concentrates\_Extracts  
Amount Received: 63.7553 g

Sample Collected: 05/7/2024 11:00  
Sample Received: 05/07/2024 15:24  
Report Created: 05/10/2024 18:07

**Microbials**

**Pass**

**E. coli by 3M Petrifilm- Compliance**

Date Analyzed: 05/09/2024 Analyst Initials: DHV SOP: C4-SOP-MICRO-010

Analyte	LOQ	Limit	Result	Qualifier	Status
	CFU/g	CFU/g	CFU/g		
<i>E. coli</i>	10	100	<10		Pass

**Aspergillus and Salmonella by qPCR - Compliance**

Date Analyzed: 05/09/2024 Analyst Initials: DHV SOP: C4-SOP-MICRO-013

Analyte	Result	Qualifier	Status
	in one gram		
<i>Salmonella spp.</i>	Not Detected		Pass
<i>Aspergillus</i>	Not Detected		Pass

Aspergillus includes species flavus, fumigatus, niger, and terreus. Salmonella and Aspergillus by Medicinal Genomics.

VVS Investments LLC, DBA Summus Grow  
1039 E Carefree Hwy  
Phoenix, AZ 85085  
16027414145  
Lic#: 00000131DCYO00924714

Sample: S405015-09  
CC ID#: 2405C4L0013.1273  
Lot#: N/A  
Batch#: TC050724HRT1  
Batch Size: N/A  
Manufacture Date:  
Harvest Date:

**FINAL**

Sample Name: TC050724HRT1 - Trop Cherry Live Hash Rosin  
Strain Name: Trop Cherry  
Matrix: Concentrates\_Extracts  
Amount Received: 63.7553 g

Sample Collected: 05/7/2024 11:00  
Sample Received: 05/07/2024 15:24  
Report Created: 05/10/2024 18:07

**Residual Solvents by Headspace GC/MS - Compliance**

**Pass**

Date Analyzed: 05/08/2024 Analyst Initials: HSP SOP: C4-SOP-CHEM-005

Analyte	LOD	LOQ	Limit	Result	Qualifier	Status	Analyte	LOD	LOQ	Limit	Result	Qualifier	Status
	ppm	ppm		ppm				ppm	ppm				
Acetone		122.0	1000	<LOQ	Pass		2,2-Dimethylbutane		39.02		<LOQ		
Acetonitrile		48.78	410	<LOQ	Pass		2-methylpentane/ 2,3-dimethylbutane		78.05		<LOQ		
Benzene		0.976	2	<LOQ	Pass		2-Propanol (IPA)	609.8	5000		<LOQ		Pass
Butanes		609.8	5000	<LOQ	Pass		Isopropyl acetate	609.8	5000		<LOQ		Pass
<i>n</i> -Butane		609.8		<LOQ			Methanol	365.9	3000		<LOQ		Pass
<i>iso</i> -Butane		609.8		<LOQ			Pentanes	609.8	5000		<LOQ		Pass
Chloroform		14.63	60	<LOQ	Pass		<i>n</i> -Pentane	609.8			<LOQ		L1
Dichloromethane		73.17	600	<LOQ	Pass		<i>iso</i> -pentane	609.8			<LOQ		
Ethanol		609.8	5000	<LOQ	Pass		<i>neo</i> -Pentane	609.8			<LOQ		L1
Ethyl acetate		609.8	5000	<LOQ	Pass		Toluene	112.2	890		<LOQ		Pass
Diethyl Ether		609.8	5000	<LOQ	Pass		Xylenes	268.3	2170		<LOQ		Pass
n-Heptane		609.8	5000	<LOQ	Pass		<i>m/p</i> -Xylene		536.6		<LOQ		
Hexanes		39.02	290	<LOQ	Pass		<i>o</i> -Xylene		268.3		<LOQ		
<i>n</i> -Hexane		39.02		<LOQ			Ethyl benzene		268.3		<LOQ		
3-Methylpentane		39.02		<LOQ									

VVS Investments LLC, DBA Summus Grow  
1039 E Carefree Hwy  
Phoenix, AZ 85085  
16027414145  
Lic#: 00000131DCYO00924714

Sample: S405015-09  
CC ID#: 2405C4L0013.1273  
Lot#: N/A  
Batch#: TC050724HRT1  
Batch Size: N/A  
Manufacture Date:  
Harvest Date:

**FINAL**

Sample Name: TC050724HRT1 - Trop Cherry Live Hash Rosin  
Strain Name: Trop Cherry  
Matrix: Concentrates\_Extracts  
Amount Received: 63.7553 g

Sample Collected: 05/7/2024 11:00  
Sample Received: 05/07/2024 15:24  
Report Created: 05/10/2024 18:07

### Notes and Definitions

Item	Definition
I1	Interference. Relative intensity of a characteristic ion in the sample analyte exceeded 30% of the relative intensity in the reference spectrum.
L1	The percent recovery of the LCS was above the control limit for the test but analyte was not detected above the Action Limit in Table 3.1.
Q3	Testing result is for informational purposes only and cannot be used to satisfy dispensary testing requirements in R9-17-317.01(A) or labeling requirements in R9-17-317. Testing result is not accredited under ISO 17025.
V1	CCV recovery exceeded control limits but the sample analyte concentration was below maximum allowable concentrations in table 3.1
< LOQ	Results below the Limit of Quantification.
ND	Not Detected
Limit	Maximum allowable concentration as defined by Table 3.1 in Arizona Administrative code (A.A.C.) Title 9, Chapter 17
CFU/g	Colony forming units per gram
ppm	Parts per million
ppb	Parts per billion
NT	Not Tested
Sum of Cannabinoids = THCA + d9-THC + CBDA + CBD + d8-THC + CBG + CBN + CBC	
Total Cannabinoids = Total THC + Total CBD + d8-THC + CBG + CBN + CBC	

### CASE NARRATIVE

**ARIZONA DEPARTMENT OF HEALTH SERVICES' WARNING:**

Marijuana use can be addictive and can impair an individual's ability to drive a motor vehicle or operate heavy machinery. Marijuana smoke contains carcinogens and can lead to an increased risk for cancer, tachycardia, hypertension, heart attack, and lung infection. Marijuana use may affect the health of a pregnant woman and the unborn child. KEEP OUT OF REACH OF CHILDREN. Using Marijuana during pregnancy could cause birth defects or other health issues to your unborn child.